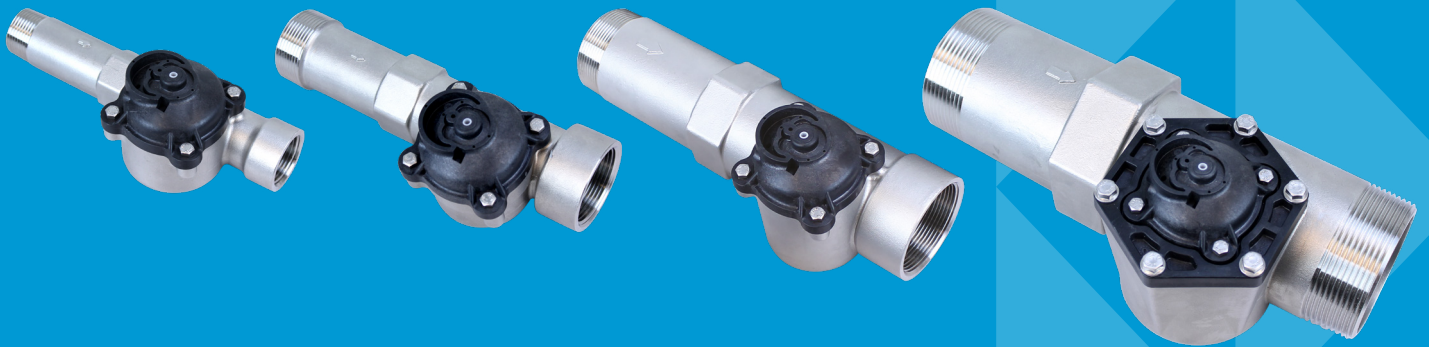




TECHNICAL SHEET

FLECK STAINLESS STEEL METERS





FLECK STAINLESS STEEL METERS

TECHNICAL CHARACTERISTICS

- Suitable for commercial and industrial applications
- Single and multi-tank system compatibility
- All-in-one electronic and mechanical flow sensing
- Rust and corrosion resistant
- 1", 1.5" and 2" models are hot water rated to 65°C



1"



1.5"



2"



3"

SPECIFICATIONS

METER TYPE	Max flow rate (m ³ /h)	Pressure drop @ max Flow rate (bar)	K-Factor (Pulses/Liter)	Accuracy range +/- 5% (Lpm)	Extended range (m ³)	Standard range (m ³)	CV
1" paddle	9	0.34	2.11	2.6 - 151	5 - 100	1 - 20	18
1.5" paddle	17	0.3	1.06	5 - 283	12 - 200	2.5 - 40	40
2" paddle	34	0.32	0.53	11 - 568	25 - 375	5 - 75	70
3" paddle	80	0.62	0.18	26 - 1135	70 - 1200	15 - 240	135